

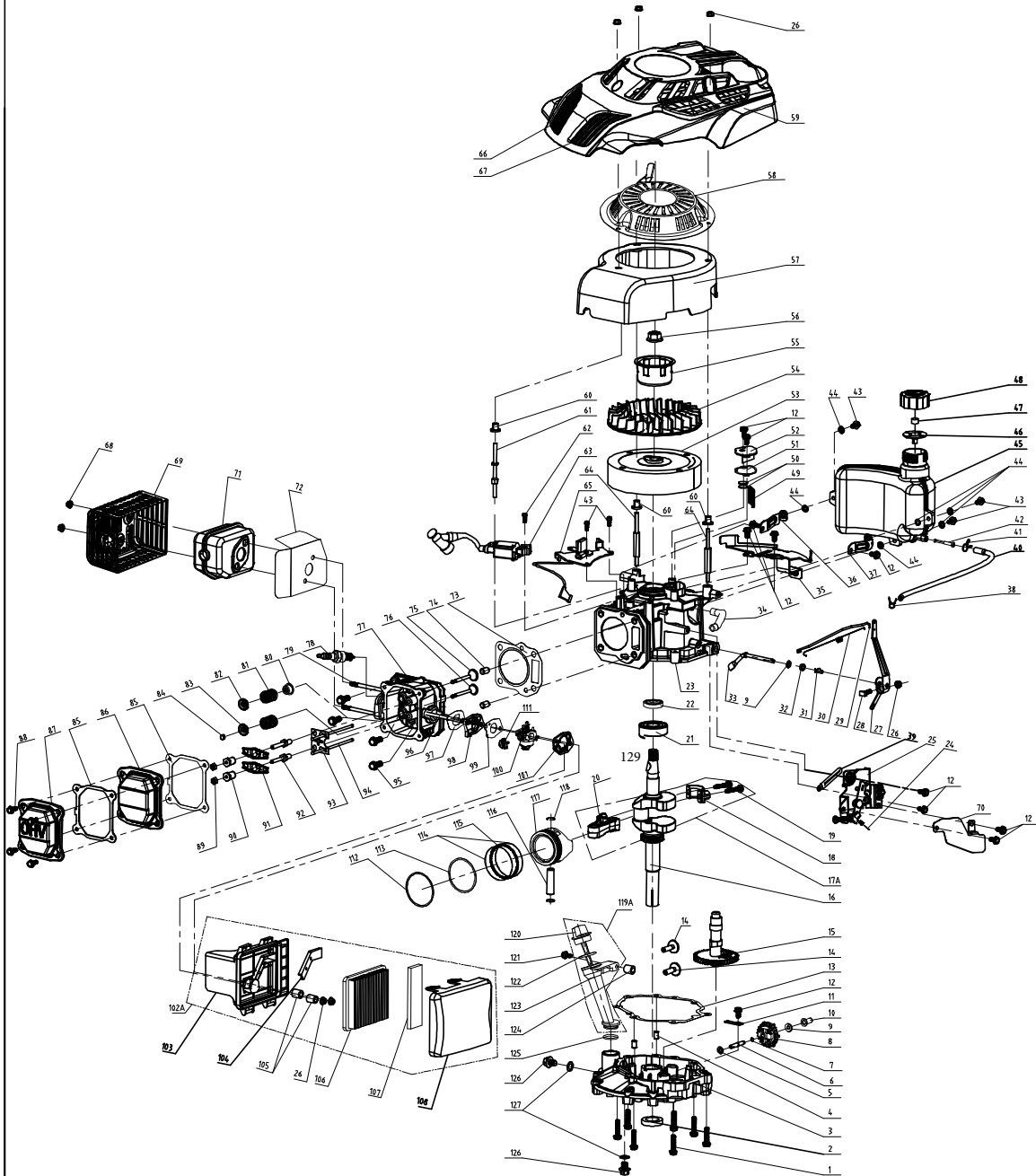
## RPM4635HWB

Part No.	Material Code	Discription in English	Q-ty
1	20340060130	Foam Pipe	1
2	70540082000	E Type Stop Lever	1
3	70550070000	E Type Self-propelled Lever	1
4	70500150130	E Type Upper Handrail	1
5	70810050000	Brake Cable	1
6	70780080000	Self-propelled Cable	1
7	70050120000	Cable Fixing Clamp	1
8	60060590000	Hex Flange Face Bolt	1
9	70230090000	Rope Guide	1
10	60130020000	Cap type NUT	1
11	70520210000	G Type Lower Handrail	1
12	60110040000	Washer	2
13	60140080000	I Type Hex Nut	4
14	20240010000	Fastener	1
15	20040050000	Triangle Knob	2
16	20040070000	Triangle Knob	2
17	60150020000	II Type Nylon Lock Nut	8
18	60190140000	Flat Washer	4
19	60060420000	Coarse thread six hexagon bolt	2
20	60040090000	Carriage Bolt	2
21	70070290000	Right side board	1
22	70070300000	Left side board	1
23	70250110000	Height Adjustment Board	1
24	60040020000	Carriage Bolt	2
25	20750070000	Dust Excluder for Rear Discharge Cover	1
26	60300030000	Split Pin	4
27	20380060000	Rear Discharge Cover	1
28	60380240000	Spring for Rear Discgarge Cover	1
29	20080060000	Upper cover for 50L Full Plastic Catcher	1
30	21010010000N	Otter Board for 50L Full Plastic Catcher	1
31	70010070000	Metal Bracket for 60L Half-Plastic Cathce	1
32	20050080000B	60L Fabric Bag	1
33	70030050000	Shaft for Rear Discharge Cover	1
34	60220010000	Washer	2
35	20160120000	Mulching Plug	1
36	70850540000	Rear Drive Shaft Assy for Self-propelled	1
37	20880080000	B Type 10" Wheel Assy	2

38	20620060000	Outside Cover for B Type 10" Wheel Hub	2
39	60150090000	All metal flange lock nut	4
40	70180240000	Height Ajustment Pull Rod	1
41	20270010000	Height Adjustment Ball	1
42	60200240000	Blade Washer	1
43	70130350000	S461 Blade	1
44	60100030000	Blade Bolt	1
45	60370020000	"O" Type Washer	1
46	20460010000	Water Inlet	1
47	60160010000	Big Washer for Washer Inlet	1
48	20590020000	Plug	1
49	70740650000	S461 Deck	1
50	70140400000	Blade Adapter	1
51	60320210000	Belt	1
52	70300150000	Small Straight Gear(Ratchet Wheel L)	1
53	70300160000	Small Straight Gear(Ratchet Wheel R)	1
54	60290060000	Pin	6
55	20660130000	Belt Cover	1
56	60060390000	Hex Flange Face Bolt	1
57	70150240000	Bush for Belt Cover	2
58	70860210000	S461 Transmission	1
59	20610030000	Inner Cover for B Type 10" Wheel Hub	2
60	60200310000	Washer	4
61	60240060000	Flexible Washer	6
62	60410180000	Self-propelled Spring	1
63	20610080000	Inner Cover for B Type 7" Wheel Hub	2
64	19960120000	T475 Engine	1
65	60060180000	Hex Flange Face Bolt	2
66	60410080000	Spring for Pull Rod	1
67	70840170000	Front Drive Assy	1
68	20880100000	7" B Type Wheel Assy	2
69	20620030000	Outside Cover for B Type 7" Wheel Hub	2
70	60010110000	Punching bearing	8
71	70290070000	Press Board for Rear Drive Shaft Assy - L	1
72	70290050000	Press Board for Rear Drive Shaft Assy - R	1
73	20430030000	Bush for Rear Drive Shaft Assy	2
74	70060070000	Bracket Press Board	1
75	20120080000	Side Discharge Cover	1
76	20110100000	side discharge	1

77	60150080000	II Type Nylon Lock Nut	3
78	60170400000	ross recessed hexagon head tapping screw	6
79	70030060000	Shaft for Side discharge Cover	1
80	60390070000	Spring for Side Discharge	1
81	60060930000	Coarse thread six hexagon bolt	4
82	60060660000	Hex Flange Face Bolt	2

# T475- 2013



Part No.	Material no.	English Description	Qty
1	60060590000	Bolt	7
2	60360100000	oil seal	1
3	75240010000	Crank box cover	1
4	60280030000	spacing pin	2
5	60200060000	Gasket	1
6	75270010000	rate-limiting gear shaft	1
7	60400010000	Gear Shaft circlip	1
8	75520020000	rete-limiting gear assy.	1
9	60200070000	Gasket	2
10	25070010000	Sliding Sleeve	1
11	75280010000	rate-limiting gear shaft	1
12	60060520000	Bolt	11
13	75720010000	Seal Gasket of Crankcase	1
14	75250010000	pin	2
15	75470020000	camshaft assy.	1
16	75510010000	crankshaft assy.	1
17	75460020000	connecting rod assy.	1
18	75460020-2	connecting rod cap	1
19	75460020-3	connecting rod bolt	2
20	75460020-1	connecting rod body	1
21	60010140000	rolling bearing	1
22	60360090000	oil seal	1
23	75500010000	crankshaft box	1
24	60410190000	throttle control spring	1
25	75360040000	throttle assy.	1
26	60140020000	Hex flange nuts	6
27	75070060000	throttle rocker arm	1
28	60060730000	bolt	1
29	75160010000	Handspike of Valve	1
30	60410050000	valve spring	1
31	60300040000	R type pin	1
32	60360080000	oil seal	1
33	75290010000	rate-limiting rocker arm shaft	1
34	25030030000	waste pipe	1
35	75330010000	main bracket of fuel tank	1
36	75310010000	right bracket of fuel tank	1
37	75340010000	left bracket of fuel tank	1
38	60230010000	fuel pipe lock clamp II	1
39	60450010000	clip	1
40	25160010000	fuel pipe	1
41	60230020000	fuel pipe lock clamp I	1
42	25150010000	Filtering Net Duct of Fuel	1
43	60060570000	Bolt	5
44	60440170000	Cushion Blocking gasket	6

45	25180010000	fuel tank body	1
46	60440030000	Fuel Tank Cap seal gasket	1
47	80010070000	fuel tank cap sponge	1
48	25170010440	fuel tank cap	1
49	75150010000	oil filter net	1
50	75100020000	Valve Element of Respirator Cover	2
51	75720150000	Gasket of Respirator Cover	1
52	75400010000	Respirator Cover Plate Assy	1
53	75390020000	flywheel assy	1
54	25040010000	fan	1
55	75210010000	starter hub	1
56	60140050000	Hex flange nuts	1
57	25010010000	Blower Housing	1
58	75430020200	pull starter assy.	1
59	25190080000	Engine Cover	1
60	25010010-1	Blower Housing Bush	1
61	60080100000	Different-shaped double-head bolts I	1
62	60060580000	Bolt	1
63	75370030000	ignition assy.	1
64	60080120000	Different-shaped double-head bolts II	2
65	75380070000	Detent Assy	1
66	25000020200	left decorative dilms	1
67	25000030200	right decorative dilms	1
68	60150100000	Self-locking nut	2
69	75530020000	muffler cover assy.	1
70	75010020000	throttle protector board	1
71	75540020000	muffler assy.	1
72	75740020000		1
73	75720100000		1
74	60280020000	spacing pin	2
75	75170010000	IntakeValve	1
76	75190010000	Exhaust Valve	1
77	75490020000	cyclinder head assy.	1
78	75140020000	spark plug	1
79	60080020000	Dual-head bolts	2
80	60360130000	oil seal assy	1
81	60380080000	valve spring	2
82	75180010000	Spring Coil of Intake Valve	1
83	75180020000	Spring Coil of Exhaust Valve	1
84	75200010000	Top Cover of Exhaust Valve	1
85	75720070000		2
86	75220010000	cyclinder head cover I	1
87	75220020000	cyclinder head cover II	1
88	60060530000	Bolt	4
89	60160030000	And nuts	2

90	60160050000	Valve adjustment nut	2
91	75230010000	Rocker of Valve	2
92	60060760000	valve rocker arm support bolts	2
93	75260010000	push rod director plate	1
94	75350010000	push rod	2
95	60050030000	locking bolt	4
96	60080030000	Dual-head bolts	2
97	75730020000		1
98	25090010000	Air Inlet Pipe	1
99	75730030000		1
100	75410070000	carburetor assy.	1
101	60440190000	Steel Gasket	1
102			1
103	25220010000	Air Filter Pedestal	1
104	25020010000	Exhaust Gas Cover Board	1
105	75050030		2
106	25300020000		1
107	25300010000		1
108	25120010000	Air Filter Upper Cover	1
111	25210020050	prime button II	1
112	75130060000	Piston Ring I	1
113	75130030000	Piston Ring II	1
114	75060010000	Guide Rail	2
115	75000010000	Bushing Ring	1
116	60310010000	piston pin	1
117	75120010000	Piston	1
118	60400020000	Piston Pin circlip	2
119	25200040050	Lubricating Gauge Assy	1
120	25200040-2	Lubricating Gauge	1
121	60060630000	Bolt	1
122	GB3452	"O" Ring 25x3.1	1
123	25200040-1	Lubricating Pipe	1
124	25080010000	Distance Sleeve of Lubricating Setting	1
125	GB3452	"O" Ring 21x2.3	1
126	60060780000	Oil drain bolt	2
127	60200150000	Oil drain bolt gasket	2